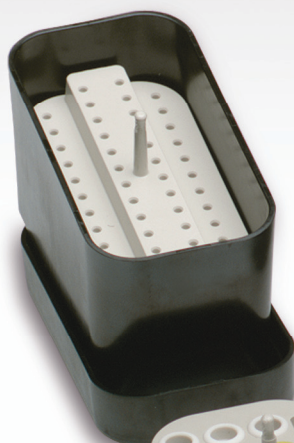


# Endo Storage Systems

Organized. Versatile. User Friendly.

Basic Box shown with Step Module. Holds up to 48 instruments.



Socket Module insert contains 18 color-coded tubes, excellent for gutta percha, absorbent points, and obturators.



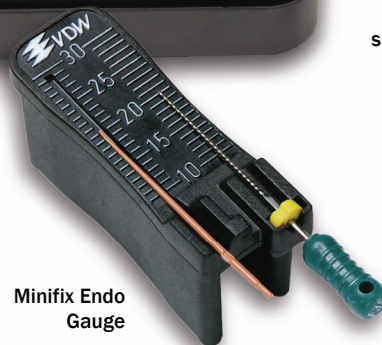
Semi Box holds 4 Mini or 2 Step or Socket Modules. Holds files up to 31mm in length.



Mini Box shown with Mini Step Module



Minifix Endo Gauge



- Mix and match any combination
- Organize endo instruments, gutta percha, absorbent points, and obturators
- Compatible with Minifix Endo Measuring Gauge
- Resistant to chemicals and disinfecting solutions
- Sterilizable up to 480°F, impervious to stain

Item Number	Description	Dimensions
410STD	Semi Box 2000 - Empty	4.31" L x 4.31" W x 2.69" H with lid
450STD	Basic Box 2100 - Empty	4.25" L x 2.25" W x 2.69" H with lid
480STD	Mini Box 2100 - Empty	2.25" L x 2.25" W x 2.69" H with lid
401STD	Step Module (insert only)	3.88" L x 1.88" W x 1.31" H
402STD	Socket Module (insert only)	3.88" L x 1.88" W x 1.31" H
403STD	Mini Step Module (insert only)	1.88" L x 1.88" W x 1.31" H
404STD	Mini Socket Module (insert only)	1.88" L x 1.88" W x 1.31" H
481STD	Mini Box with Mini Step Module	2.25" L x 2.25" W x 2.69" H with lid
482STD	Mini Box with Mini Socket Module	2.25" L x 2.25" W x 2.69" H with lid

Building a future together, one customer at a time.



Johnson City, TN 37604  
800-992-7767  
www.roydent.com